



## Indoor/Outdoor 4 MP PoE Day/Night Network Camera

TV-IP314PI (v1.0R)

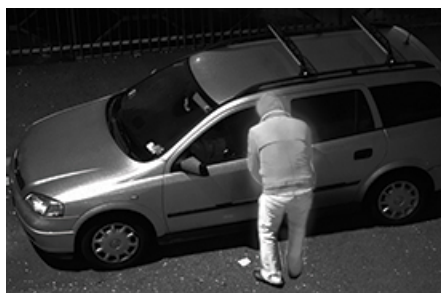
- 4 MP HD resolution
- Compact IP66 weather rated housing
- Night vision up to 30 m (100 ft.)
- Save installation costs with Power over Ethernet (PoE)
- Program motion detection recording and email alerts
- Wide Dynamic Range image balancing
- ONVIF and IPv6 support

The Indoor/Outdoor 4 MP PoE Day/Night Network Camera, model TV-IP314PI, provides powerful 4 megapixel night vision in complete darkness for up to 30 meters (100 ft.). Even in extreme environments, this ultra-compact camera will function all year, thanks to an IP66 weather-rated housing. Use the included pro-grade software to manage up to 32 TRENDnet cameras, or download the free iOS® or Android™ mobile app.



### Power over Ethernet (PoE)

PoE offers cost savings and the flexibility to install this compact bullet camera in the desired location.



### Day/Night HD Surveillance

Powerful 4 MP video at 20 fps in H.264+ compression (2 MP 1080p at 30 fps) and 30 m night vision provide 24-hour surveillance.



### Outdoor Ready

Built for extreme environments with an IP66 weather rating and an operating temperature range of -30 – 60 °C (-22 – 140 °F).

## Networking Solution



- 1 PoE port
- 2 Power port
- 3 Adjustable mounting bracket
- 4 IP66 housing
- 5 IR LEDs

## Hardware



### Adjustable Bracket

Fully adjustable integrated mounting bracket provides installation flexibility



### PoE

Save installation costs with Power over Ethernet (IEEE 802.3af)



### Outdoor Ready

Outdoor IP66 weather rated and an operating temperature range of -30 – 60 °C (-22 – 140 °F)

## Performance



### 4 Megapixel

Record 2688 x 1520 pixel video at 20 fps in H.264+ compression



### Night Vision

Night vision up to 30 m (100 ft.) in complete darkness



### Smart IR

Dynamic IR adjustment optimizes night visibility



### WDR

120 dB Wide Dynamic Range improves video quality in high contrast lighting environments

## Camera Management



### Multi-Language Interface

Support for English, French, Spanish, German, and Portuguese



### Advanced Playback

Advanced in-camera archived video review functionality



### Storage

SMB / CIFS support with notification if storage drive is full



### Motion Detection

Create motion detection windows with separate sensitivity settings and event triggers



### Recording Schedule

Define a weekly recording schedule



### Tamper Detection

Receive tamper detection video clips via email



### IPv6

IPv6 support



### ONVIF / PSIA

ONVIF (Profile S, Profile G) and PSIA compliant



### Free Apps

See live video on a mobile device with free iOS® and Android™ apps



### Complimentary Software

Complimentary pro-grade software to manage up to TRENDnet 32 cameras

## Specifications

### Lens

- Focal length: 4 mm, F2.0
- Focal depth: 20 cm +
- Lens: fixed focus
- Sensor: 1/3" progressive scan CMOS
- DNR: 3D DNR
- WDR: 120 dB
- Zoom: user define zoom area

### Viewing Angle

- Horizontal: 83°
- Vertical: 45°
- Diagonal: 98°

### Minimum Illumination

- IR off: 0.01 lux
- IR on: 0 lux
- Built-in IR cut filter
- 30 m IR illumination distance
- Smart IR

### Video Resolution

- H.264, H.264+: 2688 x 1520 up to 20 fps (1920 x 1080 up to 30 fps)
- MJPEG: 640 x 360 up to 30 fps

### Hardware Standards

- IEEE 802.3
- IEEE 802.3u
- IEEE 802.3x
- IEEE 802.3af

### Device Interface

- 10/100 Mbps PoE port
- Power port (for non-PoE installations, adapter sold separately)
- Grounding point
- Integrated articulated mounting base
- Reset button

### Network Protocol

- IPv4, IPv6, UDP, TCP, ICMP, ONVIF Profile S and Profile G, PSIA
- DHCP, NTP, DNS, DDNS, SMTP, FTP, SNMP (v1, v2c, v3)
- NFS, SMB/CIFS
- HTTP, HTTPS

- PPPoE
- UPnP, Bonjour, RTSP, RTP, RTCP, SSL

### Operating Temperature

- -30 – 60 °C (-22 – 140 °F)

### Operating Humidity

- Max. 95% non-condensing

### Certifications

- CE
- FCC

### Dimensions

- 55 x 55 x 80 mm (2.2 x 2.2 x 3.15 in.)

### Weight

- 362 g (0.8 lb.)

### Power

- Input: PoE (802.3af)
- Consumption: 5 Watts max.

### Optional Power Supply (Sold separately)

- Input: 100 – 240 V AC 50/60 Hz 0.5 A
- Output: 12 V DC 1 A
- 5.5 mm barrel connector
- TRENDnet power adapter, model 12VDC1A (not included)

### Management Interface

- Multi-language support: English, French, German, Spanish and Portuguese
- IP address filter
- QoS traffic prioritization
- Time, date, and text overlay
- Image settings: brightness, contrast, saturation, hue, sharpness, smart IR, exposure time (1/3 – 1/100,000), scan rate, mirror, flip, WDR, back light compensation, white balance, digital noise reduction
- WDR enhances video quality in high contrast daytime lighting
- Digital Noise Reduction enhances night vision quality
- Recording: to computer, NAS, SMB / CIFS share, or through software
- Scheduled recording: continuous and motion detection

- Motion detection fields: define custom motion detection areas, motion sensitivity, and dynamic motion analysis
- Privacy masks: define custom privacy mask areas
- Video tamper detection: email notification if the viewing field darkens suddenly
- Video playback interface: playback recorded video from remote storage
- Alert messages: storage full, storage error, and illegal login
- Snapshot: real time snapshot, motion detection with schedule, video tamper detection with schedule
- Supported dynamic DNS services: Dyn.com and NO-IP.com
- Management Setting: maximum 32 user accounts
- Supports remote management
- Compatibility: Chrome™ 24.0 or higher, Internet Explorer® 9.0 or higher, Firefox® 13.0 or higher, Safari® 4.0 or higher

### TRENDnetView Pro Software

- Supports up to 32 TRENDnet cameras
- Multiple language support
- Set recording options (motion detection, schedule, event trigger)
- Search and playback
- Custom viewing modes and options
- Compatibility: Windows® 10, 8.1, 8, 7, Vista, XP, Windows Server® 2003, 2008, 2012

### TRENDnet IPView App

- Free iOS® and Android™ app
- View your camera on your mobile device
- Take snapshots

### Warranty

- 3 year limited

### Package Contents

- TV-IP314PI
- CD-ROM (Utility Software & User's Guide)
- Quick Installation Guide
- Camera mounting hardware

