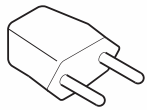


EARTHED 3-POLE ADAPTER

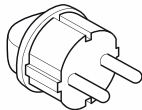
EUROPE TO AUSTRALIA

POWER ALL YOUR DEVICES

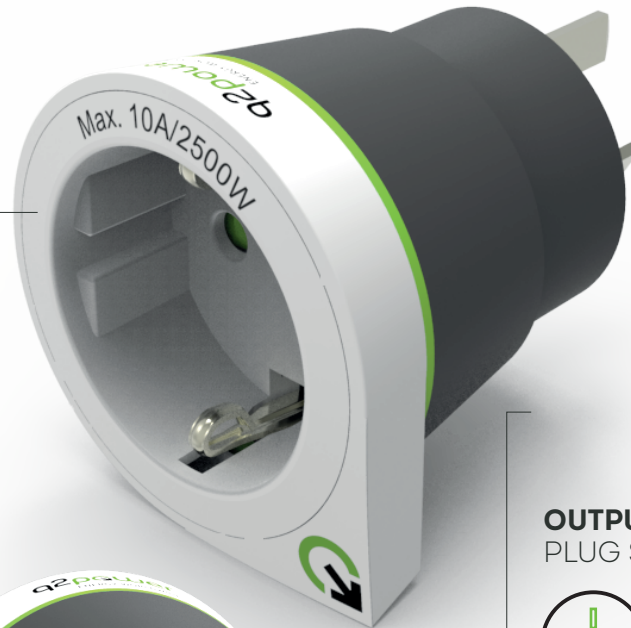
INPUT
EUROPE (SCHUKO)



2-POLE



3-POLE



OUTPUT
PLUG STANDARD I



Besides Australia other 19 countries around the globe have the socket standard that accepts the 3-pole Australian plug, which is the plug standard I.



FURTHER SPECIFICATIONS

Safety approved (IEC 60884)
KEMA-KEUR certification
Suitable for earthed and unearthed plugs

Input voltage: 100V - 250V
Max. load: 10A
Power rating: 100V - 1000W/250V - 2500W

WEIGHT & DIMENSIONS

Product: 68 g / L 5.5 W 5.5 H 7.5 cm
Packaging: 100 g / L 6.4 W 6.4 H 8 cm

PACKAGING UNIT

Master: 20
Dimensions master: 33 x 14 x 18.5 cm

Made in China

PRODUCT	ARTICLE-NO.	EAN-CODE
Europe to Australia	1.200120	7640167560349